

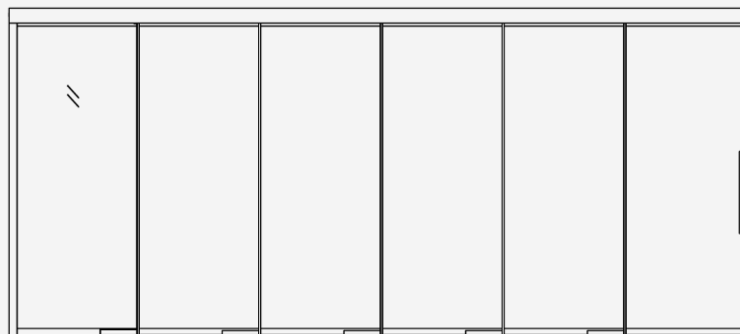
EXPO

Product Sheet

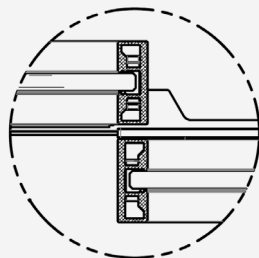
EXPO makes any space adaptable and dynamic, allowing for instant transformations between fully open space and private work and meeting areas. The telescopic doors feature single or double framed glass panes with drop seals for superior acoustics, a synchronized pulley system for a flush profile when open or closed, an integrated handle, and a stunning look in any Muraflex finish.



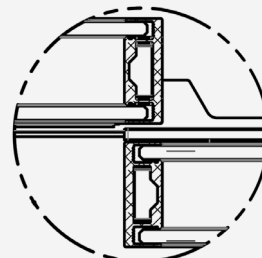
Extrusions



Closed position



Single glazed closed position



Double glazed closed position

Glazing and Panels:

- Single glazed framed, double glazed framed, and wood panes
- Thickness: 1/2" and 3/8"
- Tempered, laminated, low iron (extra clear), and speciality glass

Gaskets:

- Available in black, white, and clear

Integrated electrical components:

- Motorized system
- Obstacle detection
- High and low voltage wiring
- Integrated electrical components including room scheduler, card reader, and electrical strike available
- Switch glass available

Tolerance:

- Total of 1/8"

Lead times:

- 10-12 weeks
- 12+ weeks on custom system

Doors:

- Synchronized pulley system
- Left stacking, right stacking & center split
- Flushed profiles in closed and open position
- Standard door hardware
- Flat or beveled integrated pull handle
- Ladder pull
- Drop seal
- Soft close/open available on manual system

System limitations:

- Requires structural beam
- Maximum height of 10'
- Maximum 120 kg per door
- Maximum 5 doors (600 kg) on motorized system

Acoustical properties:

- Single glazed STC assembly score ranges estimated to be: 32-36
- Double glazed STC assembly score ranges estimated to be: 38-40

Profile:

Door system

Aluminum

Profile dimensions:

- Single and double glazed top extrusion: W1-3/4" x H7/8"
- Single and double glazed bottom extrusion: W1-3/4" x H7/8"
- Single and double glazed stiles extrusion: W5/8" x H1-3/4"
- Fix panel jamb and bottom extrusion: W1" x H2-3/8"
- Valance: H4"

EXPO

Sustainability & Finishes

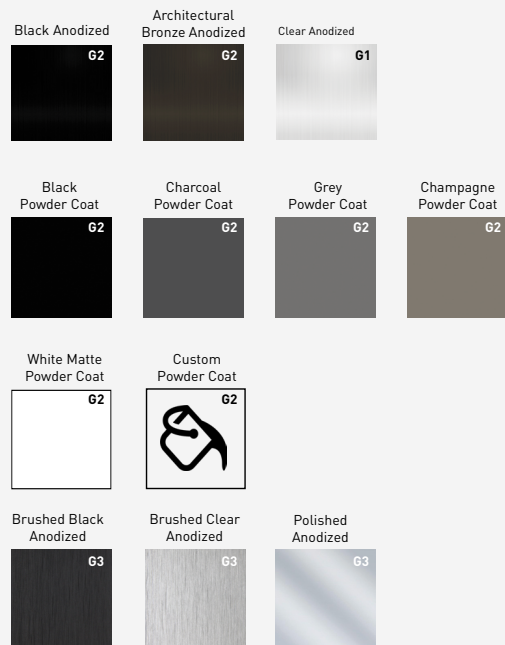


Sustainability

At Muraflex, we are dedicated to diminishing our impact on the environment. We are also committed to continually improving our procedures in terms of product development, supply, packaging and distribution in an effort to minimize our environmental footprint.



The Finishes



Due to variances in screen calibration or print quality, finish images may not accurately represent the actual color sample.